

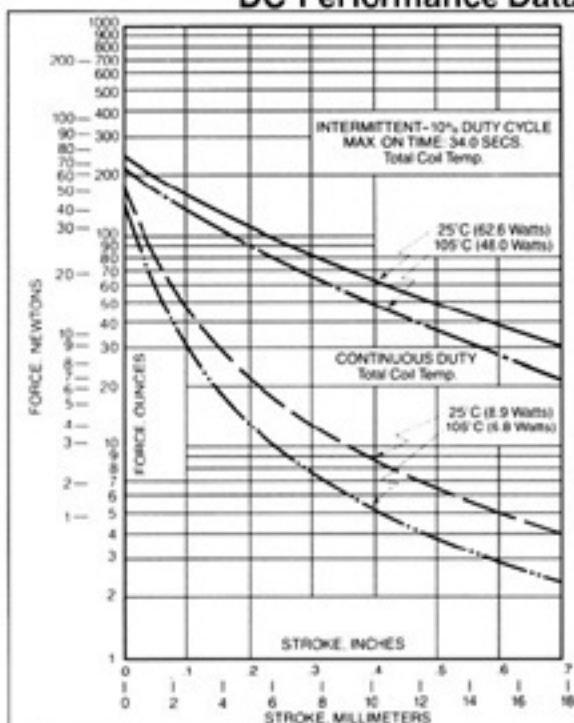
SGA Solenoid



Specifications

Type of Operation:	Push or pull	Plating Standards:	Frame — Zinc, chromate; Clevis — Zinc; Plunger — Electroplate Nickel; Stop — Electroless Nickel (Others available on request)
Standard Voltages:	6 VDC, 12 VDC, 24 VDC, (Others available on request)	Plunger Type:	Slot and cross drilled per drawing standard (Options available per drawing)
Insulation Material:	Class "B" standard (Others available on request)	Plunger Weight:	1.9 ounces standard
Coil Finish:	Acetate tape standard (Also available: varnish dip, glass cloth tape, fungus resistant finish)		
Coil Terminations:	Terminals per drawing standard (Also available: flying leads, bent terminals, banded terminals, solder lugs)		

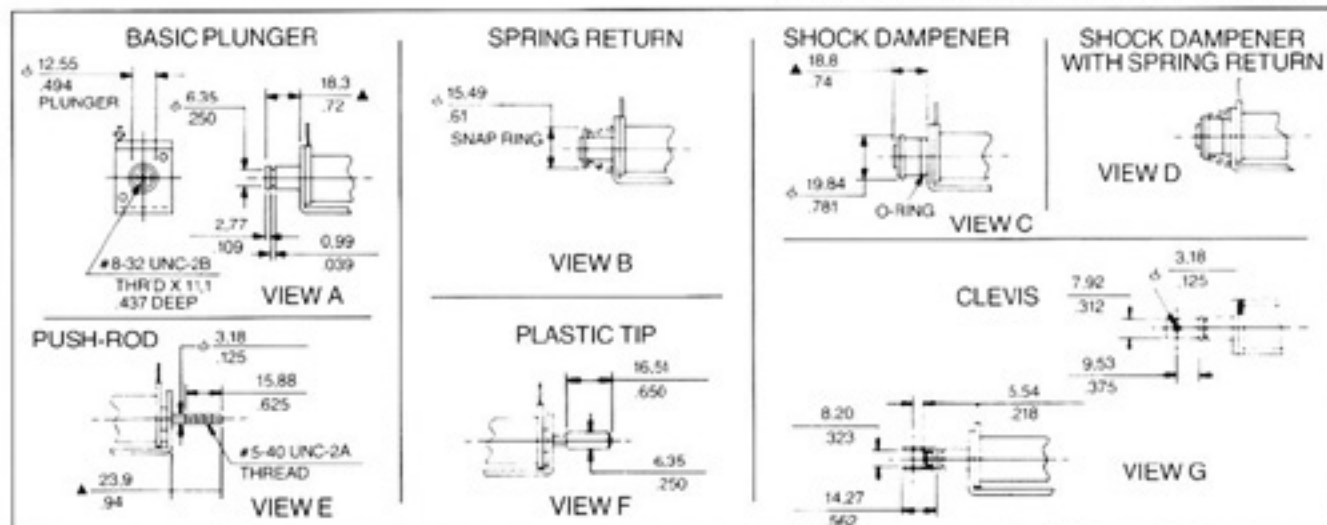
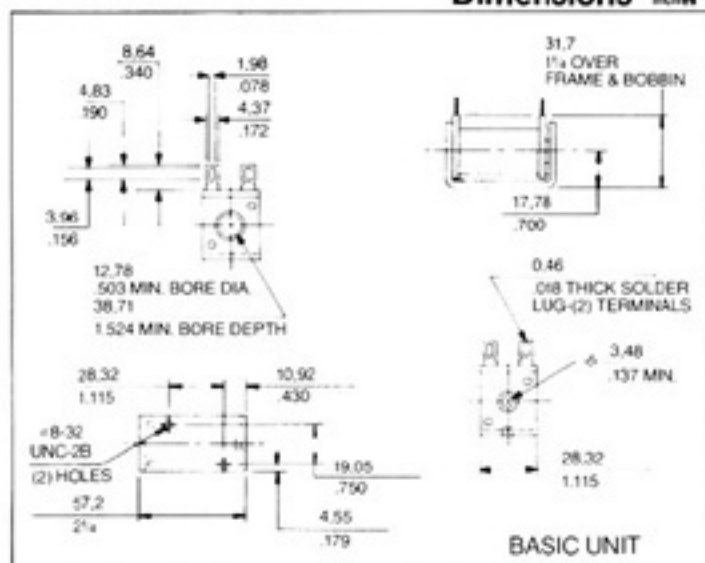
DC Performance Data



Duty Cycle	Maximum "On" Time	Stroke (inches)	Force* (ounces)	Rated Power (watts)
Continuous	x	0.0	175.0	8.9
		0.2	22.0	
		0.4	8.9	
		0.6	5.1	
10%	33.5 sec.	0.0	240.0	62.6
		0.2	112.0	
		0.4	63.0	
		0.6	39.0	

* TYPICAL FORCE @ 25 C AND NOMINAL RATED DC VOLTAGE

Dimensions



▲ ENERGIZED DIM.



850 Perimeter Road
Manchester, NH 03103
Toll Free: 800 227-5955
Facsimile: 603 622-2690
Email: sales@jewellinstruments.com
www.jewellinstruments.com